

# FLUID LINE TECHNOLOGY

MANUFACTURER OF SANITARY  
AND ULTRACLEAN COMPONENTS

PRODUCT CATALOG



CUSTOM

STANDARD

PROTOTYPE

## MANUFACTURER OF SANITARY AND ULTRACLEAN COMPONENTS

---

Since 1989, Fluid Line Technology has been the answer to the need for manufacturing quality crafted stainless steel custom fabrications and standard sanitary components for the Bio-Technology, Bio-Pharmaceutical, Food, Dairy, Beverage and Semi-Conductor marketplace.

Fluid Line Technology has produced a wide variety of custom fabrications to complement our line of standard products. Over the years, our standard product lines have developed in conjunction with our Customer's needs and concerns. We have taken great pride in developing these products and look forward to the opportunities to learn from and serve new and existing Customers.

We have always maintained the attitude of, "if you can dream it up, we can build it!" As you look through our catalog you will see many examples of custom fabricated items that look as if they are right off the shelf or from a catalog. This is the direct result of a staff of employees who are passionate about stainless steel custom fabrications! We feel so strongly about this, we go the extra mile to procure our own materials, mainly 316L, low ferrite and low sulfur content to ensure the highest quality.

Along with our state-of-the-art TIG, Orbital, and Hand welding department, we house a fully tooled and creative machining and cutting department to meet most any custom fabrication needs. Our ID and OD polishing professionals can polish any of your fabrications to meet or exceed any surface finish you may require.

Our onsite washing and electro-polishing department is staffed with highly trained professionals. We also have an onsite inspection department and we maintain being BPE and ISO compliant.

Fluid Line is located in Southern California. Our facility is very near to our local suppliers and vendors in order to keep our costs to a minimum. We pride ourselves on being an efficient manufacturing facility with a professionally designed floor plan for optimal work flow.

Other services we provide are, manufacturing for OEM'S, engineering services, skid & filtration assembly, product development, onsite tube bending, onsite abrasive flow polishing, onsite citric passivation, and local nitric passivation to your required specifications.

## MANUFACTURING CAPABILITIES

---

### □ **METAL FORMING**

Tube Bending up to 2" diameter

Tee Porting Branches and Multi- Outlet manifolds up to 6" diameter

### □ **MATERIALS**

316 L

Alloy 22 & 276

Performance Plastics

Consult Factory for other exotic materials

### □ **CHEMICAL TREATMENT**

Electro Polishing

Passivation Citric / Nitric

### □ **WELDING**

From 1/8" diameter through 12" diameter

Manual weld

Semi Automatic weld

Orbital weld

Weld documentation logs upon request

### □ **POLISHING**

From 1/4" diameter through 12" diameter

Mechanical Polishing from mill finish to 5Ra

Abrasive Flow Polishing service available

### □ **MACHINING**

Manual Lathe & Mill

CNC Lathe & Mill

### □ **ADDITIONAL SERVICES**

Helium Leak Test

Third Party Inspection

Hydrostatic Test

Bore Scope Inspection

## SPECIALTY ITEMS

---

- ❑ Abrasive Flow Machine, 90 degree elbows available 1/2"-3/4"-1"
- ❑ Dip tubes
- ❑ Transfer panels
- ❑ Jumpers
- ❑ Restricting Orifices
- ❑ Helospray assemblies
- ❑ Sample Vials
- ❑ Stability Test Vials
- ❑ Filter Housings
- ❑ Multi-port block body design
- ❑ Custom valve fabrication
- ❑ Tubular sub-assemblies
- ❑ Integration of controls and instrumentation into process piping
- ❑ Filling needles
- ❑ Rebuild / Refurbish filter housings
- ❑ Rebuild / Refurbish diaphragm valves

## ACQUASEAL® ULTRA-CLEAN AIR-ACTUATED DIAPHRAGM VALVE

- All stainless steel construction
- All machined surfaces
- Non-rotating indicating stem
- ASME BPE 2014 version compliant
- Patent bonnet feet design
- Kaltraz diaphragm option
- Featured actuator retainer design reduce footprint
- Actuator internal travel stop



## ACQUASEAL® ULTRA-CLEAN MANUAL DIAPHRAGM VALVE



- All stainless steel construction
- All machined surfaces
- ASME BPE 2014 version compliant
- Patent bonnet feet design
- Kaltraz diaphragm option

# SIP-ABLE SAMPLE VALVE



## BENEFITS

- Minimal Dead Leg
- Fully Autoclavable / Sanitary design
- Non-rotating indicating stem
- ASME BPE compliant materials and design for cleanability and sterility
- Quick and easy assembly / disassembly per your maintenance schedule
- Steam port for SIP cleaning cycle (Standard 1/4" clamp)

*CONTACT FACTORY FOR  
PART NUMBER CONFIGURATION*

## TECHNICAL INFORMATION

- Pressure rating up to 150 psi
- Variety of surface finishes available
- Variety of Alloy materials available
- Variety of chemical treatments available
- NPT and clamp instrument connections
- All insertion lengths available
- MTR'S standard for full material traceability (Heat numbers / codes)
- All insertion lengths available
- MTR'S standard for full material traceability (Heat numbers / codes)

# SANITARY INLINE BLEED AND SAMPLE VALVES

## BENEFITS

- Minimal Dead Leg
- Fully Autoclavable / Sanitary design
- Non-rotating system
- Quick and easy assembly / disassembly per your maintenance schedule
- Fully customizable to customer specifications



## TECHNICAL INFORMATION

- Controlled sulphur stainless steel
- Available in Alloy 22
- Variety of surface finishes available
- Selection of "O" rings available: EPDM - Viton - Silicone (Clear / Red)
- PTFE-TFM Seat
- Variety of chemical treatments available
- Variety of Valve sizes:
  - 1/8" valve = 0.104" Inlet Bore size
  - 1/4" valve = 0.187" Inlet Bore size
  - 1/2" valve = 0.370" Inlet Bore size
- MTR's standard for full material traceability (Heat numbers / codes)

# SANITARY ANGLE BLEED AND SAMPLE VALVES (SAFETY CAP)

## BENEFITS

- Minimal Dead Leg
- Fully Autoclavable / Sanitary design
- Indicating stem for Open / Close
- Designed for easy cleaning and sterilization
- Fully customizable to customer specifications

## TECHNICAL INFORMATION

- Controlled sulphur stainless steel
- Available in Alloy 22 & 276 and AL6XN
- Variety of surface finishes available
- Selection of "O" rings available:  
EPDM - Viton - Silicone (Clear / Red / Kaltraz)
- PTFE-TFM Seat / Elastomer Seat
- Variety of chemical treatments available
- Variety of Valve sizes:  
1/8" valve - 0.104" Inlet Bore size  
1/4" valve = 0.187" Inlet Bore size  
1/2" valve = 0.370" Inlet Bore size
- MTR's standard for full material traceability (Heat numbers / codes)

## MULTIPLE HANDLE COVERS

### BENEFITS

- Minimal Dead Leg / Solid /  
Submersible / Toggle /  
Toggle Safety / Submersible Toggle /  
Submersible Toggle Safety



# TEE BLOCK BLEED AND SAMPLE VALVES

## BENEFITS

- ❑ Minimal Dead Leg
- ❑ Sanitary design
- ❑ Available with locking or non-locking safety handle
- ❑ Fully customizable to customer specifications

## TECHNICAL INFORMATION

- ❑ Pressure rating up to 150 psi
- ❑ Variety of surface finishes available
- ❑ Variety of Alloy materials available
- ❑ Variety of chemical treatments available
- ❑ NPT and clamp instrument connections
- ❑ All insertion lengths available
- ❑ MTR'S standard for full material traceability (Heat numbers / codes)



# SANITARY ANGLE THERMOWELLS



## BENEFITS

- ❑ BPE compliant / Sanitary design
- ❑ Fully customizable for specific needs
- ❑ Autoweld and clamp connections are standard

## TECHNICAL INFORMATION

- ❑ Pressure rating up to 150 psi
- ❑ Variety of surface finishes available
- ❑ Variety of Alloy materials available
- ❑ Variety of chemical treatments available
- ❑ NPT and clamp instrument connections
- ❑ All insertion lengths available
- ❑ MTR'S standard for full material traceability (Heat numbers / codes)

# SANITARY SAMPLE COOLERS (STEAM CONDENSERS)

## BENEFITS

- BPE compliant
- Sanitary / Industrial / Disposable
- Inlets & Outlets fully customizable
- Horizontal & vertical designs are standard
- Configuration tailored to customer needs
- Stands are optional

## TECHNICAL INFORMATION

- Pressure rating up to 150 psi
- Variety of surface finishes available
- Variety of chemical treatments available
- Welded surfaces and jackets are available in 316L or Alloy 22
- MTR'S standard for full material traceability (Heat numbers / codes)



# POINT OF USE SANITARY HEAT EXCHANGER

## BENEFITS

- BPE compliant / Sanitary design
- Cleanable / Drainable
- Horizontal & vertical application available
- Configuration tailored to customer needs
- Special shell design prevents coolant / product contamination
- Easy visual inspection

## TECHNICAL INFORMATION

- Pressure rating up to 150 psi
- Variety of surface finishes available
- Variety of chemical treatments available
- Welded surfaces and jackets are available in 316L or Alloy 22
- Special point of use Heat Exchanger engineered on application
- MTR'S standard for full material traceability (Heat numbers / codes)



# HELOSPRAY DEVICE



## BENEFITS

- ❑ Sanitary design
- ❑ Full coverage of your entire vessel
- ❑ Hygienic and non hygienic applications
- ❑ Replaces traditional non rotating spray ball
- ❑ Powered by the line pressure of cleaning media
- ❑ For optimal cleaning the first time and every time

*See our website  
for a live product demonstration*

## TECHNICAL INFORMATION

- ❑ Available in 316L SS
- ❑ Installs on a dip tube
- ❑ Built on application and custom design assemblies
- ❑ Tube Dia. 1/4" -3/8" -1/2" -3/4" -1" and longer as special order
- ❑ MTR'S standard for full material traceability (Heat numbers / codes)

# FILTER HOUSINGS



## BENEFITS

- ❑ BPE compliant / Sanitary design
- ❑ Optional vent bleed valve available
- ❑ Easy draining and sampling for integrity testing
- ❑ Available in single and multi-round housings with various inlet and outlet connections
- ❑ Designed to prevent build-up and entrapment of contaminants
- ❑ Bayonet style filter base for fast and easy filter replacement

## TECHNICAL INFORMATION

- ❑ Built for industry standard use with 222 Code 8 or 226 Code 7 style cartridge
- ❑ Available in 316L stainless steel electropolished for corrosion resistance
- ❑ MTR'S standard for full material traceability (Heat numbers / codes)



## BENEFITS

- ❑ BPE compliant / Sanitary design
- ❑ Custom design for each application
- ❑ No foam capabilities
- ❑ 45 degree tube available
- ❑ Straight through design
- ❑ Dip tube for spray device
- ❑ Multiple tubes from a single cap

## TECHNICAL INFORMATION

- ❑ Available in 316L / Alloy 22
- ❑ Various finishes available
- ❑ MTR'S standard for full material traceability (Heat numbers / codes)



# INSTRUMENT TEE'S AND CPM'S



## BENEFITS

- ❑ BPE compliant / Sanitary design
- ❑ Fully customizable for specific needs
- ❑ Autoweld and clamp connections are standard

## TECHNICAL INFORMATION

- ❑ Pressure rating up to 150 psi.
- ❑ Variety of surface finishes available
- ❑ Variety of Alloy materials available
- ❑ Variety of chemical treatments available
- ❑ MTR'S standard for full material traceability (Heat numbers / codes)



## MANIFOLDS



## VIALS



## COAXIAL



CUSTOM FABRICATIONS

SMALL



MEDIUM



LARGE



**FLUID LINE TECHNOLOGY CORPORATION**

### Certificate of Surface Treatment

Company Name		Certificate No.	
Contact		Customer P.O. No.	
Address		Job No.	
City, State, Zip		Time	

Item	Quantity	Part Number	Description

Electro Polish	Treatment
Passivate	

Electro Finish:  Finish       OD Finish  
 ID Finish

**Certification:** We hereby certify that the parts described above were given the treatment indicated, in accordance with the stated specifications.

Authorized Representative:	Date:

9362 Eton Ave • Chatsworth, CA 91311 • 818-998-8848 Phone • 818-998-6331 Fx  
www.fluidlinetech.com

**FLUID LINE TECHNOLOGY CORPORATION**

### Welding Conformance

Company Name		Certificate No.	
Contact		Customer P.O. No.	
Address		Job No.	
City, State, Zip		Time	

Item	Quantity	Part Number	Description

**Certification:** Fluid Line Technology certifies that no filler has been used on parts and it is 100% automatic fuse weld procedure.

Authorized Representative:	Date:

9362 Eton Ave • Chatsworth, CA 91311 • 818-998-8848 Phone • 818-998-6331 Fx  
www.fluidlinetech.com

**FLUID LINE TECHNOLOGY CORPORATION**

### Certificate of Pressure Test

Company Name		Certificate No.	
Contact		Customer P.O. No.	
Address		Job No.	
City, State, Zip		Time	

Item	Quantity	Part Number	Description

**Procedure:**  
 1- Cap all outlets.      **PASS:**      **NO PASS:**  
 2- Connect pressure test gauge  
 3- Connect 75 psi Air Inlet.      **DATE TESTED:**  
 4- Pressure tank to 90 psi.  
 5- Test unit under 90 psi, for a minimum of 3 minutes.

**Certification:** We hereby certify that the parts described above were given the treatment indicated, in accordance with the stated specifications.

Authorized Representative:	Date:

9362 Eton Ave • Chatsworth, CA 91311 • 818-998-8848 Phone • 818-998-6331 Fx  
www.fluidlinetech.com

**FLUID LINE TECHNOLOGY CORPORATION**

### Quality Control Documentation / Compliance Rec

Project: \_\_\_\_\_  
 Drawing No.: \_\_\_\_\_  
 Line No.: \_\_\_\_\_

Weld No.	Material Type	Size	Cont/Heat No.	Date	Weld Procedure	Ins Log	Ins Recd
01							
02							

Customer:	Part No.
Attn:	Part No.
	Weld Log No.
	Job No.
	Welder
	Welder Log No.
	Quantity

All welds performed in accordance with PQR's established by: \_\_\_\_\_ Inspected by: \_\_\_\_\_  
 Qualified by: \_\_\_\_\_ Date: \_\_\_\_\_

9362 Eton Ave • Chatsworth, CA 91311 • 818-998-8848 Phone • 818-998-6331 Fx  
www.fluidlinetech.com

**FLUID LINE TECHNOLOGY CORPORATION**

### Certificate of Electropolish

Company Name		Customer P.O. #	
Attn:		Date	
Part #		Quantity	
Job #		Time	

**Certification:** This is to certify that the parts were polished and Electro-polish to 20 Ra in accordance to Fluid Line Technology Corporation.

**Description:**  
 Process: VIA EP PROCESS

Authorized Representative:	Date:

9362 Eton Ave • Chatsworth, CA 91311 • 818-998-8848 Phone • 818-998-6331 Fx  
www.fluidlinetech.com

**FLUID LINE TECHNOLOGY CORPORATION**

### PASSIVATION PROCEDURE

Citrisurf 3050 Pharmaceutical Grade

Passivation Procedure - Tank / Submersion Bath Application

- 1- Clean surface to be free of all oils and grease with Plankal Soap.
- 2- Submerge surface / part in Citrisurf 3050 bath.
  - Ambient temperature of room/surface = 70° and above - leave Part submerged Citrisurf 3050 for 60-minutes.
  - Surface temperature of 120° to 160° - leave part submerged in Citrisurf 3050 for 30-minutes.
- 3- After Submerging work Piece and Process is completed Rinse all wetted surfaces utilizing DI water. All surface must be free of any water stain.

#### Passivation Certification

Fluid Line Job #:	Passivated By:
Customer:	
Customer P.O. #:	
Description:	
Drawing No.:	
Quantity:	
Certificate #:	

9362 Eton Ave • Chatsworth, CA 91311 • 818-998-8848 Phone • 818-998-6331 Fx  
www.fluidlinetech.com

9362 ETON AVENUE, CHATSWORTH, CA 91311


TEL 818.998.8848 FAX 818.998.6331

EMAIL [INFO@FLUIDLINETECH.COM](mailto:INFO@FLUIDLINETECH.COM)

[WWW.FLUIDLINETECH.COM](http://WWW.FLUIDLINETECH.COM)



[WWW.FLUIDLINETECH.COM](http://WWW.FLUIDLINETECH.COM)



# FLUID LINE TECHNOLOGY

MANUFACTURER OF SANITARY  
AND ULTRACLEAN COMPONENTS

## SINGLE USE TECHNOLOGY

PRODUCT CATALOG



CUSTOM

STANDARD

PROTOTYPE

## MANUFACTURER OF SANITARY AND ULTRACLEAN COMPONENTS

---

Since 1989, Fluid Line Technology has been the answer to the need for manufacturing quality crafted stainless steel custom fabrications and standard sanitary components for the Bio-Technology, Bio-Pharmaceutical, Food, Dairy, Beverage and Semi-Conductor marketplace.

Fluid Line Technology has produced a wide variety of custom fabrications to compliment our line of standard products. Over the years, our standard product lines have developed in conjunction with our Customers' needs and concerns. We have taken great pride in developing these products and look forward to the opportunities to learn from and serve new and existing Customers.

We have always maintained the attitude of, "if you can dream it up, we can build it!" As you look through our catalog you will see many examples of custom fabricated items that look as if they are right off the shelf or from a catalog. This is the direct result of a staff of employees who are passionate about stainless steel custom fabrications! We feel so strongly about this, we go the extra mile to procure our own materials, mainly 316L, low ferrite and low sulfur content to ensure the highest quality.

Along with our state-of-the-art TIG, Orbital, and Hand welding department, we house a fully tooled and creative machining and cutting department to meet most any custom fabrication needs. Our ID and OD polishing professionals can polish any of your fabrications to meet or exceed any surface finish you may require.

Our onsite washing and electro-polishing department is staffed with highly trained professionals. We also have an onsite inspection department and we maintain being BPE and ISO compliant.

Fluid Line is located in Southern California. Our facility is very near to our local suppliers and vendors in order to keep our costs to a minimum. We pride ourselves on being an efficient manufacturing facility with a professionally designed floor plan for optimal work flow.

Other services we provide are, manufacturing for OEM'S, engineering services, skid & filtration assembly, product development, onsite tube bending, onsite abrasive flow polishing, onsite citric passivation, and local nitric passivation to your required specifications.

## MANUFACTURING CAPABILITIES

---

### □ **SINGLE USE TECHNOLOGY**

Fully customizable SUT Solutions  
Projects from Idea to Engineering  
to Application

### □ **METAL FORMING**

Tube Bending up to 2" diameter  
Tee Porting Branches and Multi- Outlet  
manifolds up to 6" diameter

### □ **MATERIALS**

316 L  
Alloy 22 & 276  
Performance Plastics  
Consult Factory for other  
exotic materials

### □ **CHEMICAL TREATMENT**

Electro Polishing  
Passivation Citric / Nitric

### □ **WELDING**

From 1/8" diameter through  
12" diameter  
Manual weld  
Semi Automatic weld  
Orbital weld  
Weld documentation logs upon request

### □ **POLISHING**

From 1/4" diameter through 12" diameter  
Mechanical Polishing from mill  
finish to 5Ra  
Abrasive Flow Polishing service available

### □ **MACHINING**

Manual Lathe & Mill  
CNC Lathe & Mill

### □ **ADDITIONAL SERVICES**

Helium Leak Test  
Third Party Inspection  
Hydrostatic Test  
Bore Scope Inspection

# INTRODUCING OUR

## SINGLE-USE/ LIMITED USE SAMPLING VALVE



Each design is made from only certified USP CLASS IV materials with steam sterilization capabilities of 121°C for 30 minutes.

Each *Disposable Sampling Valve* comes in a sealed pouch ready to Sanitize or Gamma sterilize pouch as an available option.

## FEATURES AND BENEFITS

- ❑ 3 cleaning cycles
- ❑ 12 cleaning cycles
- ❑ Fully Autoclavable
- ❑ USP CLASS VI Materials
- ❑ Ready-To-Sanitize Option
- ❑ Gamma Irradiation Option
- ❑ Easy-to use Twist Handle\*
- ❑ TFM™ Tip (Seat)
- ❑ Self Aligning & Non-Rotating Stem
- ❑ Zero Dead Leg for all Sizes/Connections\*\*
- ❑ No tools required to operate

\*Easy-Twist Handle refers to no tools required to operate.

\*\*The internal dead volumes is minimized to its fluid surface tension. This is not always true for our competitors.

TFM™ IS REGISTERED BY DYNEON, INC.

SINGLE-USE	LIMITED-USE
●	
	●
●	●
●	●
●	●
●	●
●	●
●	●
●	●
●	●
●	●
●	●

Fluidline Technology is proud to introduce our new Single Use Technology line of *Quick Locking Fittings*.

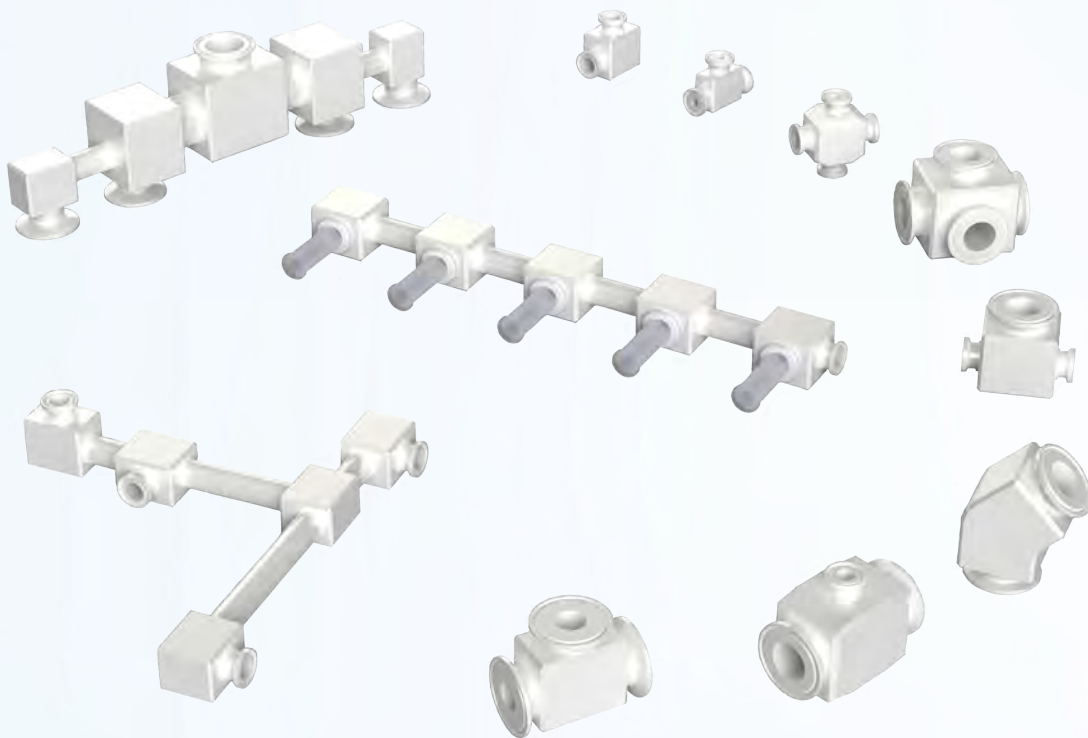
# QUICK LOCKING SYSTEM

These fittings are crafted in solid thermoplastic piping material with sanitary flanges to approach the combined strength, working temperature, and chemical resistance for simple and clean fluid management solutions in a single use system. Its compact design allows Fluid Line to build lightweight piping and instrumentation systems with minimal space requirements.

Components are manufactured from certified USP Class IV materials.

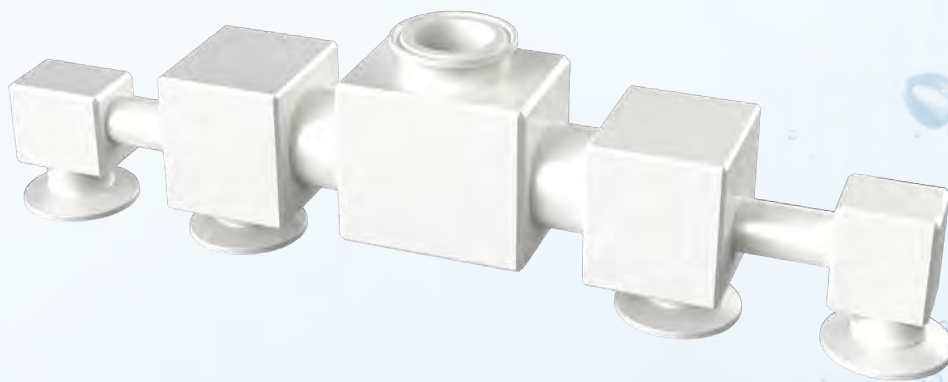
*Quick Locking Fittings* are available in various port configurations like elbows, tees, reducers, crosses, etc., in sizes from 0.25" to 1.50".

*Patent Pending*



# FEATURES AND BENEFITS

- High-pressure
- High-temperature durable construction
- USP Class IV certified material
- Fully autoclavable
- Gamma stable
- Smooth internal surface
- Various sizes available
- Various configurations available
- Good for all cGMP manufacturing
- Quick assembly, no hose barbs/wraps
- Uses: CIP system
- Uses: TFF system
- Uses: Chromatography system
- Lightweight and user friendly
- No substructure required
- Fully customizable



## 2 WAY PINCH VALVES



Components are made only from certified USP Class IV materials.

### FEATURES AND BENEFITS

- High-temperature durable construction
- All materials are USP Class VI certified
- Handles available in several colors
- Sealed assembly fully autoclavable
- Manual or air actuated configurations
- Submersible manual option
- Interchangeable manual or air actuated valve bodies
- Six standard hose sizes readily available
- Adjustable flow control
- Self-aligning & non-rotating stem
- Easy-to-use twist handle
- Open-indicating stem
- No tools needed to operate
- Available in all stainless steel
- Air actuators & controls switches available
- Special hose sizes available

*Registered patent of Exigo and Parker Hannifin*

*For more information or a quote, please contact your local sales representative or email us at [sales@fluidlinetech.com](mailto:sales@fluidlinetech.com)*

# PINCH VALVE STANDARD SIZES

Fluid Line Technology is proud to introduce our new line of pinch valves. We offer three product lines to suit your needs: Pinch Valve, I.D. Element and O.D. Element Pinch Valve.

**Pinch valves**, engineered to work with standard silicone tube sizes.

Pinch Valve							
VALVE SIZE		1/8"	3/16"	3/8"	1/2"	3/4"	1"
TUBE SIZE	I.D.	1/8"	3/16"	3/8"	1/2"	3/4"	1"
	O.D.	1/4"	3/8"	5/8"	3/4"	1"	1.375"

I.D. Element Pinch Valves offer sanitary clamp ends. This valve features a replaceable *Silicone Element* to match the dimensions of standard silicone tube applications.

I.D. Element Pinch Valve							
VALVE SIZE		1/8"	3/16"	3/8"	1/2"	3/4"	1"
TC END SIZE		FRACTIONAL TC					1"/1.5" TC
SILICONE TUBE I.D.		1/8"	3/16"	3/8"	1/2"	3/4"	1"

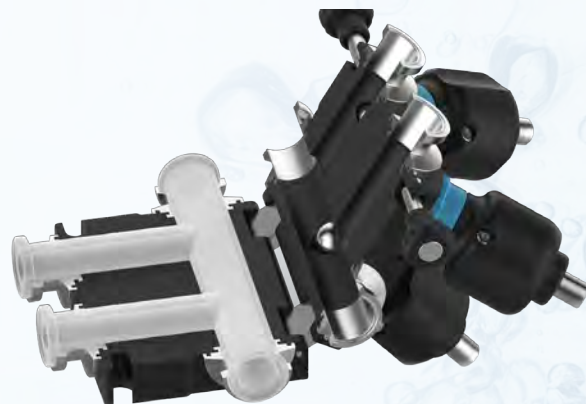
O.D. Element Pinch Valves offer sanitary clamp ends. This valve group features a replaceable *Silicone Element* to match the dimensional standards of stainless steel tube applications, which enables seamless diaphragm valve replacement under ASME BPE standards.

O.D. Element Pinch Valves							
VALVE SIZE		1/4"	3/8"	1/2"	3/4"	1"	1"
TC END SIZE		FRACTIONAL TC					1"/1.5" TC
S.S. TUBE I.D.		.180"	.305"	.375"	.620"	.870"	1.370"

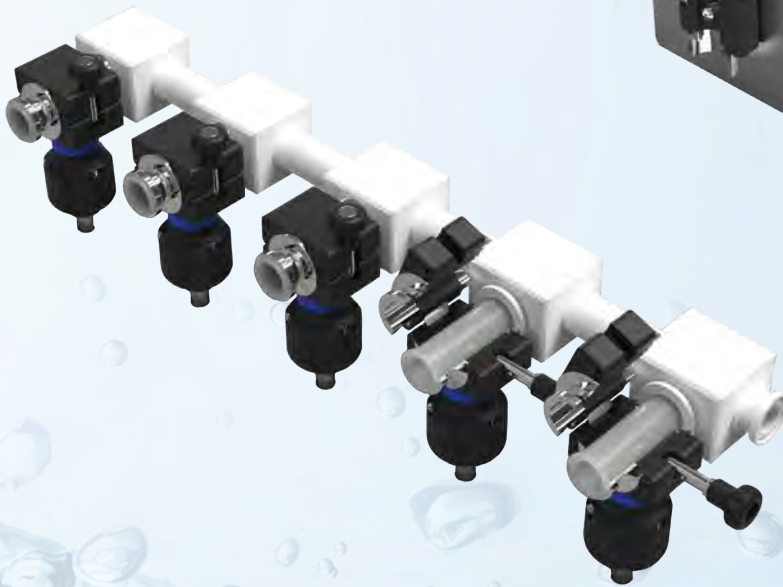
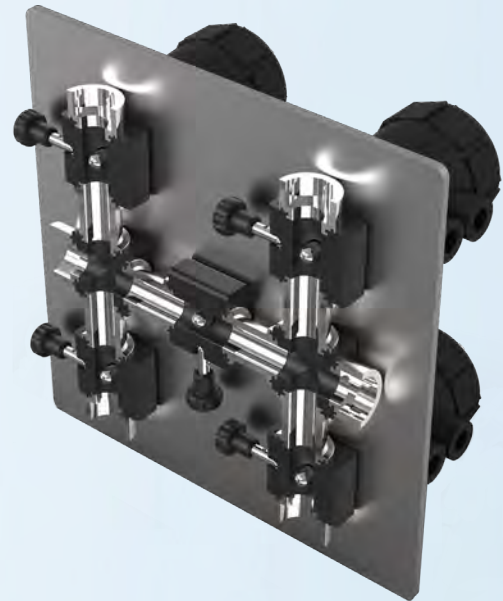
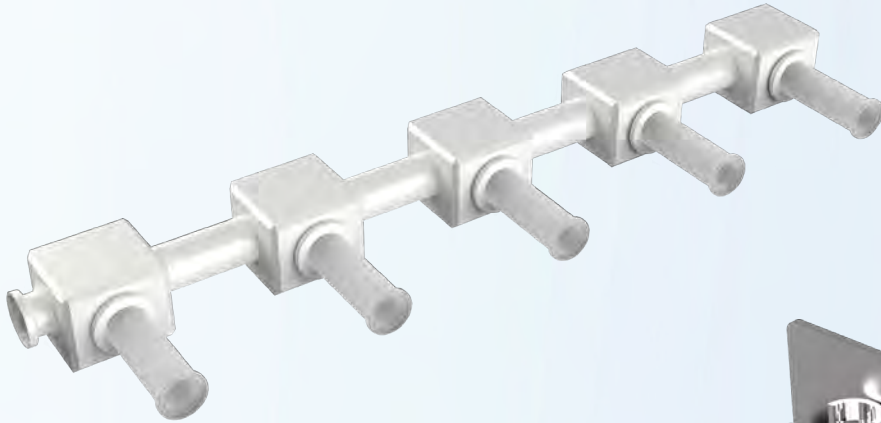
## 3 WAY PINCH VALVES



## 4 WAY PINCH VALVES



# CUSTOM SINGLE USE TECHNOLOGY SOLUTIONS



9362 ETON AVENUE, CHATSWORTH, CA 91311

TEL 818.998.8848 FAX 818.998.6331

EMAIL [INFO@FLUIDLINETECH.COM](mailto:INFO@FLUIDLINETECH.COM)

[WWW.FLUIDLINETECH.COM](http://WWW.FLUIDLINETECH.COM)



[WWW.FLUIDLINETECH.COM](http://WWW.FLUIDLINETECH.COM)